



# Quality Control Samplers

## ***Model A-310***

An inexpensive option for attaining representative samples of dry bulk flowable products. The compact and versatile model A-310 is a fixed pipe (fixed volume) sampler available with a 10" or 16" sample tube. All units are supplied standard with a pneumatic cylinder drive and a NEMA 12 control system.

- Fixed volume of sample collected per cycle.
- Use on grain, meal and pellet products.



## ***Model B-310***

The model B310 is a retractable tube sampler with a 2" diameter, 10" long stainless-steel sample tube. Units are available with either a pneumatic cylinder or electric actuator drive. This sampler requires mounting at an angle greater than 35° to allow the collected sample to flow out of the discharge end.

All units are supplied standard with a NEMA 12 control system.

- Variable sample sizes.
- Use on grain, meal and pellet products.
- Ideal for bagging system hopper installation.

### **GAMET MANUFACTURING, INC.**

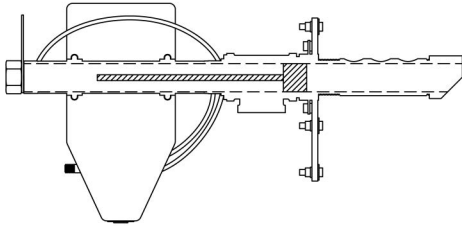
7400 Boone Avenue North • Brooklyn Park, MN USA 55428

info@gametmfg.com • www.gametmfg.com

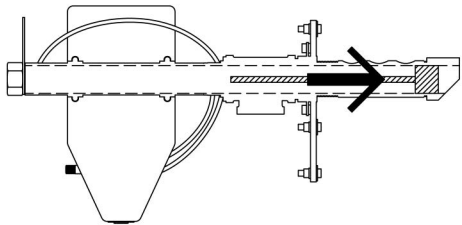
Toll Free 888-647-5475

# **Gamet Quality Control Samplers are an inexpensive option for attaining representative samples of dry bulk flowable products.**

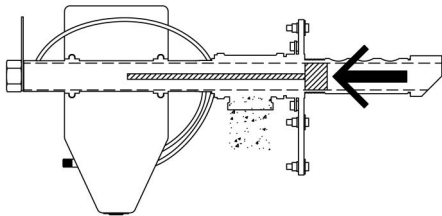
## **Model A-310**



Plunger is at rest between sampling cycles.



Timer triggers plunger to push accumulated material from sampler tube. Plunger hesitates while new sample drops into sampling chamber.

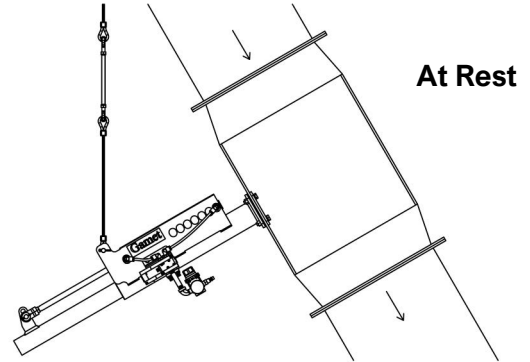


Plunger pulls sample through collecting tube, sample drops to container which may be located immediately under tube or even several stories below.

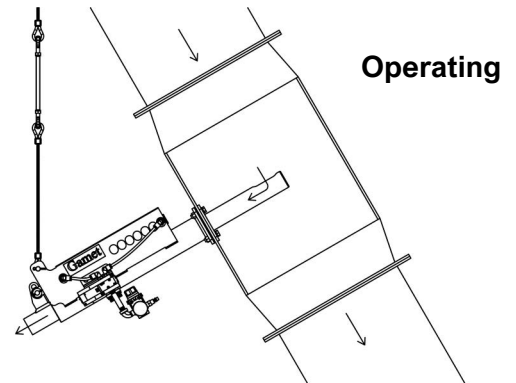
### **Available Options**

- Ceramic epoxy coating optional.
- Carbon & Stainless-steel sample tube options.
- Explosion proof solenoid and controls available.

## **Model B-310**



Between sampling cycles the B-310 stainless steel sampling tube is withdrawn from the product flow. This reduces sample tube wear and significantly increases the useful life of the sampler. To operate the unit either turn the on/off switch to the on position or depress the manual cycle operation switch.



Once the unit is activated, the sample tube is inserted into the product flow by the use of an air cylinder. Product enters the sampler through a slotted opening in the sample tube and flows via gravity out of the sample discharge point. This process can be repeated as often as desired either automatically or manually.

### **Available Options**

- Explosion proof versions available.



### **GAMET MANUFACTURING, INC.**

7400 Boone Avenue North • Brooklyn Park, MN USA 55428

info@gametmfg.com • www.gametmfg.com

Toll Free 888-647-5475