

Eagle Pneumatic Ticket Delivery System



The Eagle Pneumatic Ticket Delivery System transports tickets 25 per second up to 1,000 feet through a single, connecting tube between the truck scale and the batchman/dispatch office. It can save between 3 and 5 hours of truck time for each 100 trucks that move through your yard.

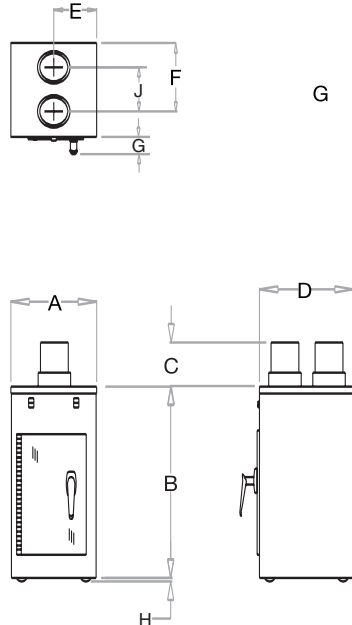
The pneumatic dispatch system is a low-cost, easy-to-use system that helps move trucks through your operation faster than ever. This pressure/vacuum system is designed with a "recall" feature and stainless steel truck station for reliability and durability in any outside installation.

Ideal for rock quarries, asphalt and concrete plants, the Eagle Pneumatic Ticket Delivery System saves your operation time and money while you keep focused on your business moving forward. Call your Eagle Pneumatic dealer today.



Eagle Pneumatic Ticket Delivery System

Mini Ticket Delivery—Powered Station



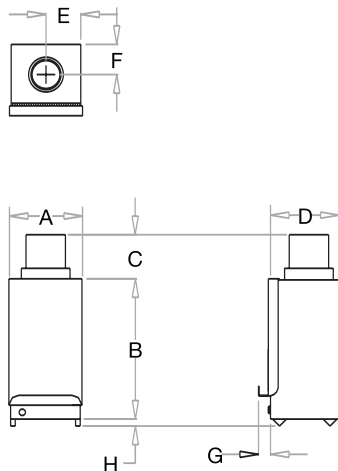
DIMENSIONS

System Size	3"	4"
A	9 1/4"	9 1/4"
B	20 5/8"	20 5/8"
C	4 3/4"	4 3/4"
D	10 1/8"	10 1/8"
E	4 5/8"	4 5/8"
F	6 7/8"	7 1/4"
G	1 7/8"	1 7/8"
H	3/4"	3/4"
J	4 1/4"	4 3/4"

ELECTRICAL REQUIREMENTS

Power, all models: 115V, single-phase, 60 Hz

Stainless Steel Truck Station—Non-Powered



DIMENSIONS

System Size	3"	4"
A	7 7/8"	7 7/8"
B	15 1/8"	15 1/8"
C	4 3/4"	4 3/4"
D	8"	8"
E	4"	4"
F	3 1/2"	3 3/8"
G	1 1/8"	1 1/8"
H	3/4"	3/4"

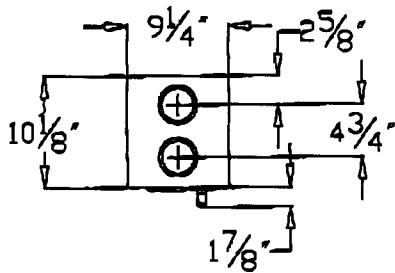
DOWN SEND STATIONS AVAILABLE

* Requires control cable between stations.



Eagle Pneumatic, Inc.
 3902 Industry Boulevard
 Lakeland, Florida 33811
 Tel: 863.644.4870
 Tel: 800.237.8261
 Fax: 863.647.5328

E-mail: sales@eaglepneumatic.com
www.eaglepneumatic.com



120 VAC

MOTOR BOX
W/ PCB

4" TUBING

CEILING

AIR LINE

SEND
SWITCH

RECALL
SWITCH

CLEAR DOOR

20 5/8"

9 1/8"

10 1/8"

INFORMATION CONTAINED HEREIN IS
PROPRIETARY TO EAGLE PNEUMATIC, INC.
ALL RIGHTS RESERVED

TOLERANCES $\pm 1/32$ " FRACTIONAL DIMENSIONS
TOLERANCES $\pm .003$ " DECIMAL DIMENSIONS
UNLESS OTHERWISE SPECIFIED



TITLE:
4" MINI TICKET
DELIVERY SYSTEM

REV.
1-8/27/90
2-11/12/93

DRAWN BY:
JMC

DATE:
3/6/99

DRAWING NO.
S-11656

CAD FILE: A27