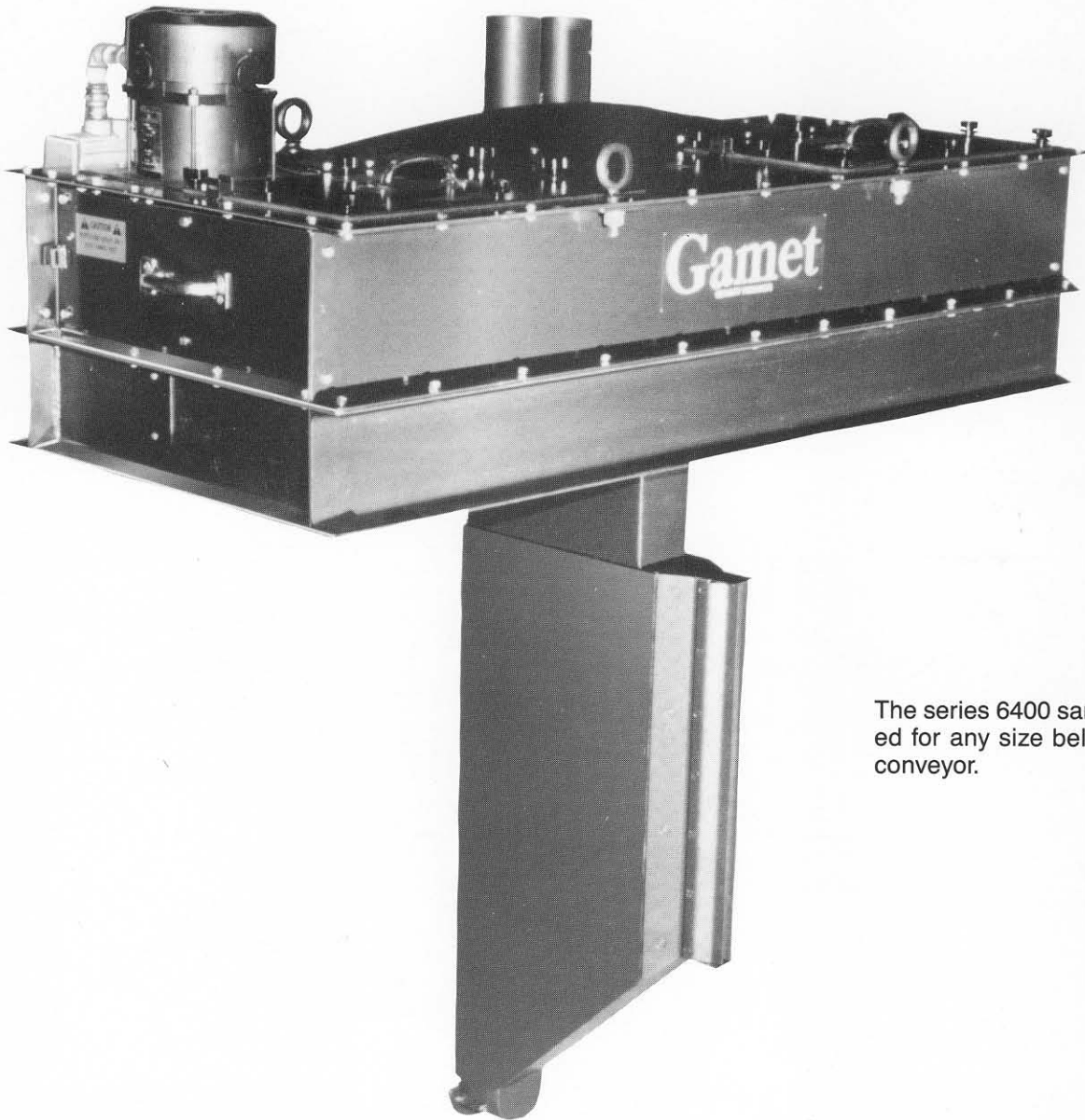


SERIES 6400 SAMPLER

For End of All Conveyors

FGIS APPROVED



The series 6400 sampler can be used for any size belt, drag or screw conveyor.

The series 6400 is a true diverter type sampler which obtains a representative sample of the entire flow stream. It can be used to sample most dry bulk flowable solids including grains, plastic pellets, powders, meals and other dry aggregate materials. The 6400 features a simple chain and sprocket drive mechanism for easy use and maintenance.

The unit mounts either at the end of a screw or drag conveyor, or ahead and above the head pulley on a belt conveyor. As material exits the conveyor it flows past the sampler. At predetermined intervals the diverter passes across the flow, collecting sample. As the sample is collected in the diverter it is pulled out pneumatically with a Sample Conveying Power Unit. Like all Gamet samplers this unit is dust tight and does not leak.

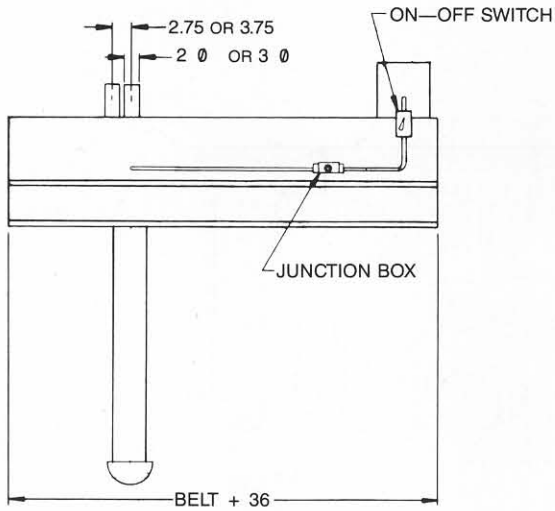
An electric control enclosure is supplied complete with all necessary switch gear and internal wiring to operate the entire system. This unit is supplied standard NEMA 12 with NEMA 4 and 9 options also available. All motors, on-off switches and limit switches on the sampler are supplied class II, group G (explosion-proof).



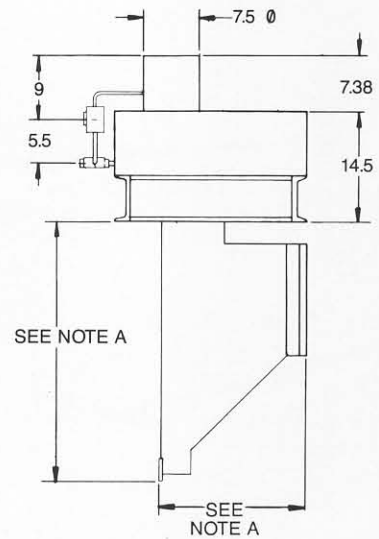
SERIES 6400 SAMPLER

Dimensions

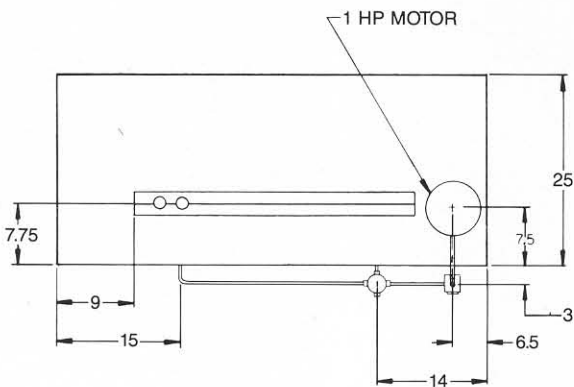
FRONT



SIDE



TOP



NOTE A: PELICAN SIZE IS DEPENDENT ON FIVE FACTORS

- 1) SIZE OF DELIVERY SYSTEM
- 2) SIZE OF HEAD PULLEY
- 3) AMOUNT OF SPACE IN HOOD
- 4) FLOW RATE
- 5) TRAJECTORY OR BELT SPEED

SAMPLER WEIGHT

CONVEYOR BELT WIDTH	WT	CONVEYOR BELT WIDTH	WT
24 Inch	685	60 Inch	985
30 Inch	735	66 Inch	1035
36 Inch	785	72 Inch	1085
42 Inch	835	78 Inch	1135
48 Inch	885	84 Inch	1185
54 Inch	935	90 Inch	1235

